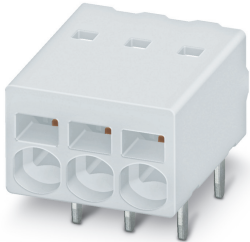


## PCB terminal block - PTSM 0,5/ 3-2,5-H THR WH R32 - 1814508

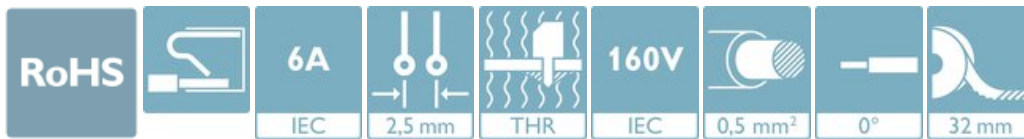
Please be informed that the data shown in this PDF Document is generated from our Online Catalog. Please find the complete data in the user's documentation. Our General Terms of Use for Downloads are valid (<http://phoenixcontact.com/download>)



PCB terminal block, nominal current: 6 A, rated voltage (III/2): 160 V, nominal cross section: 0.5 mm<sup>2</sup>, number of potentials: 3, Number of rows: 1, Number of positions per row: 3, product range: PTSM 0,5/..-H-THR WH, pitch: 2.5 mm, connection method: Push-in spring connection, mounting: THR soldering, conductor/PCB connection direction: 0 °, color: white, Pin layout: Linear double pinning, Solder pin [P]: 2.1 mm, type of packaging: 32 mm wide tape

### Your advantages

- ✓ White design: Stable color when welding and during use
- ✓ Time saving push-in connection, tools not required
- ✓ Defined contact force ensures that contact remains stable over the long term
- ✓ High current carrying capacity of 6 A in very compact dimensions
- ✓ Designed for integration into the SMT soldering process



### Key Commercial Data

|                                      |               |
|--------------------------------------|---------------|
| Packing unit                         | 1 pc          |
| Minimum order quantity               | 530 pc        |
| GTIN                                 |               |
| GTIN                                 | 4046356760058 |
| Weight per Piece (excluding packing) | 1.510 g       |
| Custom tariff number                 | 85369010      |
| Country of origin                    | India         |

### Technical data

#### Item properties

|                           |                      |
|---------------------------|----------------------|
| Brief article description | PCB terminal block   |
| Range of articles         | PTSM 0,5/..-H-THR WH |
| Pitch                     | 2.5 mm               |
| Number of positions       | 3                    |

## PCB terminal block - PTSM 0,5/ 3-2,5-H THR WH R32 - 1814508

### Technical data

#### Item properties

|                       |                       |
|-----------------------|-----------------------|
| Mounting type         | THR soldering         |
| Pin layout            | Linear double pinning |
| Number of levels      | 1                     |
| Number of connections | 3                     |
| Number of potentials  | 3                     |

#### Electrical parameters

|                             |        |
|-----------------------------|--------|
| Nominal current             | 6 A    |
| Nom. voltage                | 160 V  |
| Rated voltage (III/3)       | 160 V  |
| Rated voltage (III/2)       | 160 V  |
| Rated voltage (II/2)        | 400 V  |
| Rated surge voltage (III/3) | 2.5 kV |
| Rated surge voltage (III/2) | 2.5 kV |
| Rated surge voltage (II/2)  | 2.5 kV |

#### Connection capacity

|   |  |
|---|--|
| Connection method   | Push-in spring connection  |
| pluggable   | no   |
| Conductor cross section solid   | 0.14 mm <sup>2</sup> ... 0.5 mm <sup>2</sup>   |
| Conductor cross section flexible                                      | 0.2 mm <sup>2</sup> ... 0.5 mm <sup>2</sup> (up to 0.75 mm <sup>2</sup> supported, at a rated insulation voltage of 32 V at III/2) |
| Conductor cross section AWG / kcmil                                   | 26 ... 20  |
| Conductor cross section flexible, with ferrule without plastic sleeve | 0.25 mm <sup>2</sup> ... 0.5 mm <sup>2</sup>   |
| Conductor cross section, flexible, with ferrule, with plastic sleeve  | 0.25 mm <sup>2</sup> ... 0.34 mm <sup>2</sup>  |
| Stripping length  | 6 mm   |

#### Material data - contact

|  |   |
|--|---|
| Note                                     | WEEE/RoHS-compliant, free of whiskers according to IEC 60068-2-82/ JEDEC JESD 201 |
| Contact material                         | Cu alloy  |
| Surface characteristics                  | hot-dip tin-plated  |
| Metal surface terminal point (top layer) | Tin (4 - 8 µm Sn)   |
| Metal surface soldering area (top layer) | Tin (4 - 8 µm Sn)   |

#### Material data - housing

|                            |              |
|----------------------------|--------------|
| Housing color              | white (9010) |
| Insulating material        | PA           |
| Insulating material group  | I            |
| CTI according to IEC 60112 | 600          |

# PCB terminal block - PTSM 0,5/ 3-2,5-H THR WH R32 - 1814508

## Technical data

### Material data - housing

|  |    |
|--|----|
| Flammability rating according to UL 94 | V0 |
|--|----|

### Dimensions for the product

|                             |  |
|-----------------------------|--|
| Caption                     | Schematische Abbildung - weitere Details siehe Produktfamilienzeichnung im Download Center |
| Length [ l ]                | 10 mm  |
| Width [ w ]                 | 8 mm   |
| Height [ h ]                | 7.1 mm   |
| Pitch                       | 2.5 mm   |
| Height (without solder pin) | 5 mm   |
| Solder pin [P]              | 2.1 mm   |
| Pin spacing                 | 2.5 mm   |
| Pin dimensions              | 0.3 x 0.8 mm   |

### Dimensions for PCB design

|               |        |
|---------------|--------|
| Hole diameter | 1.2 mm |
| Pin spacing   | 2.5 mm |

### Packaging information

|                             |  |
|-----------------------------|--|
| Type of packaging           | 32 mm wide tape                          |
| Pieces per package          | 530                                      |
| Denomination packing units  | Pcs.                                     |
| [W] tape width              | 32 mm                                    |
| [A] coil diameter           | 330 mm                                   |
| [W2] coil overall dimension | 38.4 mm                                  |
| Outer packaging type        | Transparent-Bag                          |
| ESD level                   | (D) electrostatically conductive         |
| Specification               | DIN EN 61340-5-1 (VDE 0300-5-1): 2008-07 |

### Processing notes

|   |  |
|---|--|
| Process                                   | Reflow/wave soldering                    |
| Specification                             | Following IPC/JEDEC J-STD-020D.1:2008-03 |
|   | Following IEC 61760-1:2006-04            |
|   | Following IEC 60068-2-58:2005-02         |
| Moisture Sensitive Level                  | MSL 1                                    |
| Classification temperature T <sub>c</sub> | 260 °C                                   |
| Solder cycles in the reflow               | 3  |

### Electrical tests

|               |     |
|---------------|-----|
| Rated current | 6 A |
|---------------|-----|

# PCB terminal block - PTSM 0,5/ 3-2,5-H THR WH R32 - 1814508

## Technical data

### Electrical tests

|                             |                     |
|-----------------------------|---------------------|
| Conductor cross section     | 0.5 mm <sup>2</sup> |
| Rated voltage (III/2)       | 160 V               |
| Rated surge voltage (III/2) | 2.5 kV              |

### Air clearances and creepage distances

### Standards and Regulations

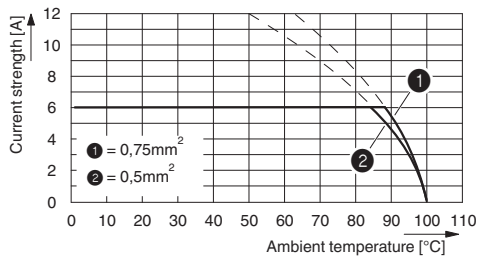
|  |        |
|--|--------|
| Connection in acc. with standard       | EN-VDE |
|  | UL     |
| Flammability rating according to UL 94 | V0     |

### Environmental Product Compliance

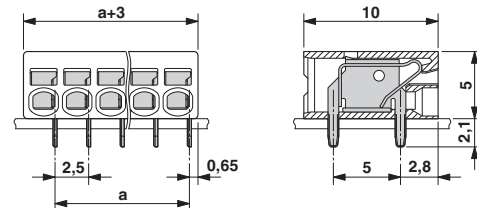
|            |   |
|------------|---|
| China RoHS | Environmentally friendly use period: unlimited = EFUP-e |
|            | No hazardous substances above threshold values          |

## Drawings

Diagram



Dimensional drawing



Type: PTSM 0,5/...-2,5-H- THR R...

Tested in accordance with DIN EN 60512-5-2:2003-01

Reduction factor = 1

No. of positions: 5

## Classifications

eCl@ss

|               |          |
|---------------|----------|
| eCl@ss 10.0.1 | 27440401 |
| eCl@ss 11.0   | 27460101 |
| eCl@ss 4.0    | 27141100 |
| eCl@ss 4.1    | 27141100 |
| eCl@ss 5.0    | 27141100 |
| eCl@ss 5.1    | 27261100 |
| eCl@ss 6.0    | 27261100 |

# PCB terminal block - PTSM 0,5/ 3-2,5-H THR WH R32 - 1814508

## Classifications

### eCl@ss

|            |          |
|------------|----------|
| eCl@ss 7.0 | 27440401 |
| eCl@ss 9.0 | 27440401 |

### ETIM

|          |          |
|----------|----------|
| ETIM 3.0 | EC001121 |
| ETIM 4.0 | EC002643 |
| ETIM 6.0 | EC002643 |
| ETIM 7.0 | EC002643 |

### UNSPSC

|               |          |
|---------------|----------|
| UNSPSC 6.01   | 30211801 |
| UNSPSC 7.0901 | 39121432 |
| UNSPSC 11     | 39121432 |
| UNSPSC 12.01  | 39121432 |
| UNSPSC 13.2   | 39121432 |
| UNSPSC 18.0   | 39121432 |
| UNSPSC 19.0   | 39121432 |
| UNSPSC 20.0   | 39121432 |
| UNSPSC 21.0   | 39121432 |

## Approvals

### Approvals

---

#### Approvals


VDE Zeichengenehmigung / UL Recognized / EAC / cULus Recognized

---

#### Ex Approvals

---

### Approval details

|                        |   |   |          |
|------------------------|---|---|----------|
| VDE Zeichengenehmigung |  | <a href="http://www2.vde.com/de/Institut/Online-Service/VDE-gepruefteProdukte/Seiten/Online-Suche.aspx">http://www2.vde.com/de/Institut/Online-Service/VDE-gepruefteProdukte/Seiten/Online-Suche.aspx</a> | 40048725 |
|------------------------|---|---|----------|

# PCB terminal block - PTSM 0,5/ 3-2,5-H THR WH R32 - 1814508

## Approvals

|                            |  |   |                  |
|----------------------------|--|---|------------------|
| UL Recognized              |  | <a href="http://database.ul.com/cgi-bin/XYV/template/LISEXT/1FRAME/index.htm">http://database.ul.com/cgi-bin/XYV/template/LISEXT/1FRAME/index.htm</a> | E118976-20130619 |
|                            |  |   | B                |
| Nominal voltage UN         |  |   | 150 V            |
| Nominal current IN         |  |   | 5 A              |
| mm <sup>2</sup> /AWG/kcmil |  |   | 26-18            |

|     |  |  |         |
|-----|--|--|---------|
| EAC |  |  | B.01687 |
|-----|--|--|---------|

|                            |  |   |                 |
|----------------------------|--|---|-----------------|
| cULus Recognized           |  | <a href="http://database.ul.com/cgi-bin/XYV/template/LISEXT/1FRAME/index.htm">http://database.ul.com/cgi-bin/XYV/template/LISEXT/1FRAME/index.htm</a> | E60425-20030527 |
|                            |  |   | B               |
| Nominal voltage UN         |  |   | 150 V           |
| Nominal current IN         |  |   | 5 A             |
| mm <sup>2</sup> /AWG/kcmil |  |   | 26-20           |

## Accessories

### Accessories

#### Cable end sleeve

Ferrule - AI 0,25- 6 BU - 3203040



Ferrule, sleeve length: 6 mm, length: 10.5 mm, color: blue

Ferrule - AI 0,25- 6 YE - 3203024



Ferrule, sleeve length: 6 mm, length: 10.5 mm, color: yellow

## PCB terminal block - PTSM 0,5/ 3-2,5-H THR WH R32 - 1814508

### Accessories

Ferrule - AI 0,34- 6 TQ - 3203053



Ferrule, sleeve length: 6 mm, length: 10.5 mm, color: turquoise

---

### Screwdriver tools

Screwdriver - SZS 0,4X2,0 - 1205202



Micro screwdriver, bladed, size: 0.4 x 2.0 x 60 mm, 2-component grip, with non-slip grip and twist cap

---

### Additional products

Sample set - SAMPLE PTSM 0,5/ 3-2,5-H-THR - 1701093



PCB terminal block, nominal current: 6 A, rated voltage (III/2): 160 V, nominal cross section: 0.5 mm<sup>2</sup>, number of potentials: 3, Number of rows: 1, Number of positions per row: 3, product range: PTSM 0,5/..-H-THR, pitch: 2.5 mm, connection method: Push-in spring connection, mounting: THR soldering, conductor/PCB connection direction: 0 °, color: black, Pin layout: Linear double pinning, Solder pin [P]: 2.1 mm, type of packaging: packed in cardboard. SAMPLE set with 5 items in belt section. When used as part of soldering process, please use items without SAMPLE marking